



BREAD READY

Ham

SLICED .5 OZ HWP 36% SMOKED 96% FAT-FREE REF PORK

3183118

VMA

6/2 LB (\$5.13 / lb)

\$61.58 / CS

All product information contained herein is subject to change, including pricing, promotions and nutritionals. For current information at the time of purchase, please contact your sales associate.



SLICED .5 OZ HWP 36% SMOKED 96% FAT-FREE REF PORK

BREAD READY

6/2 LB

Manufacturer: HORMEL FOODS SALES LLC

3183118

\$61.58 / CS

Manufacturer Product #: 39493

Product Description

Overview

TrueTaste(TM) Technology allows for a true meat flavor clean ingredient statement longer shelf life and enhanced food safety. Sliced for ease of portioning exact portion control convenience and reduced labor costs.

Features

- Sandwiches wraps and party trays.

Benefits

- TrueTaste Technology allows for a true meat flavor clean ingredient statement longer shelf life and enhanced food safety.

Ingredients

36% OF WEIGHT IS ADDED INGREDIENTS AND WATER PRODUCT CURED WITH WATER, DEXTROSE, SALT, MODIFIED CORNSTARCH, CORN SYRUP, SODIUM PHOSPHATES, SODIUM ERYTHORBATE, SODIUM NITRITE.

Product Information

Class: 30 - PORK

Category: 362 - HAM, SLICED, DICED OR STRIPS (NOT SPECIALTY)

Group: 7549 - PORK, HAM, SLICED, REFRIGERATED

Manufacture Information

MANUFACTURER :HORMEL FOODS SALES LLC

MANUFACTURER PRODUCT #:39493

Preparation & Cooking

Preparations and Cooking Instructions

Bake~Fully cooked and ready to use.

Handling Instructions

RECOMMENDED TEMPERATURE: 34F. MINIMUM TEMPERATURE: 28F. MAXIMUM TEMPERATURE: 40F. STORAGE: KEEP REFRIGERATED.

Serving Suggestions:

Sandwiches, wraps, and party trays.

All product information contained herein is subject to change, including pricing, promotions and nutritionals. For current information at the time of purchase, please contact your sales associate.



SLICED .5 OZ HWP 36% SMOKED 96% FAT-FREE REF PORK

BREAD READY

6/2 LB

Manufacturer: HORMEL FOODS SALES LLC

3183118

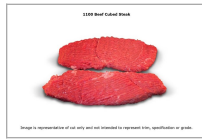
\$61.58 / CS



Manufacturer Product #: 39493

Customers Also Bought




RANCHERS SELECT
BEEF, PATTY GROUND STEAK
BURGER 80/20 2:1 ROUND 5/8"
THICK REF VACUUM-PACK
6807625
\$35.70 / CS




STOCK YARDS
BEEF, STEAK CUBED CAB 1100
RAW REF
7244716
 
\$9.24 / LB



WESTBRAE
BEAN, GARBANZO ORGANIC
CANNED
4952466

\$55.86 / CS




HILLTOP HEARTH
ROLL, HAMBURGER BRIOCHE
YELLOW 2.5 OZ 4" SLICED
COOKED BAKED FROZEN BAG
BUN
2083245

\$48.89 / CS



BAKE CRAFTERS
WAFFLE, MAPLE WHOLE-GRAIN-
RICH 3" COOKED FROZEN BULK
CHIP MINI
2315161
No Price



MUSSELMAN'S
APPLESAUCE, UNSWEETENED
SS PLASTIC CUP
7902430

No Price

All product information contained herein is subject to change, including pricing, promotions and nutritional. For current information at the time of purchase, please contact your sales associate.



SLICED .5 OZ HWP 36% SMOKED 96% FAT-FREE REF PORK

BREAD READY

6/2 LB

Manufacturer: HORMEL FOODS SALES LLC

3183118

\$61.58 / CS

Manufacturer Product #: 39493

Shipping Information:

| Physical Attributes | | | | | |
|----------------------|-------|----------------|----------|----------------|---------|
| Gross Weight: | 13 LB | Height: | 4.38 IN | Length: | 14 IN |
| Net Weight: | 12 LB | Width: | 12.75 IN | Cube: | .452 CF |
| Catch Weight: | NO | | | | |

| Storage Information | |
|--------------------------|-------|
| Min. Temperature: | 33 fa |
| Max. Temperature: | 40 fa |

All product information contained herein is subject to change, including pricing, promotions and nutritional. For current information at the time of purchase, please contact your sales associate.



SLICED .5 OZ HWP 36% SMOKED 96% FAT-FREE REF PORK

BREAD READY

6/2 LB

Manufacturer: HORMEL FOODS SALES LLC

3183118

\$61.58 / CS

Manufacturer Product #: 39493

Nutritional Facts

16 Servings Per Container

Serving Size (56g)

Amount Per Serving

Calories

| | % Daily Value * |
|---------------------------|-----------------|
| Total Fat 2g | 0% |
| Saturated Fat 1g | 5% |
| Trans Fat 0g | |
| Cholesterol 25mg | 8% |
| Sodium 670mg | 29% |
| Total Carbohydrate | 0% |
| Dietary Fiber 0g | 0% |
| Total Sugars | |
| Includes 2g Added Sugars | 4% |
| Protein 8g | |
| Vitamin A | 0% |
| Vitamin C | 0% |
| Calcium | 0% |
| Iron | 0% |

Supplemental Facts

| | % Daily Value * |
|-----------------|-----------------|
| Potassium 90 mg | 2% |

* The % Daily Value (DV) tells you how much a nutrient in a serving of food contributes to a daily diet. 2,000 calories a day is used for general nutrition advice.

Ingredients, Allergens & Nutritional Information

IMPORTANT: Product information, including ingredients, allergens and nutritional information, is provided by manufacturers/suppliers, and includes information from the Global Data Synchronization Network (GDSN) and other third party sources such as the United States Department of Agriculture. We know that allergen information is important to many customers, so we are providing product information from the manufacturers/suppliers for the FDAs top allergens (<https://www.fda.gov/food/food-labeling-nutrition/food-allergies>), along with other select ingredients. This information may not cover potential cross-contact risks or alternate forms of the allergen(s). Product formulations are subject to change and nutritional values can vary due to production, seasonal and other changes. Please always review the ingredients, allergens, nutrition information and other product information on the product packaging delivered to your location. US Foods does not assume any legal liability and makes no warranty or guaranty, express or implied, regarding the completeness or accuracy of this information. Product images are provided for reference only and may not reflect current packaging.