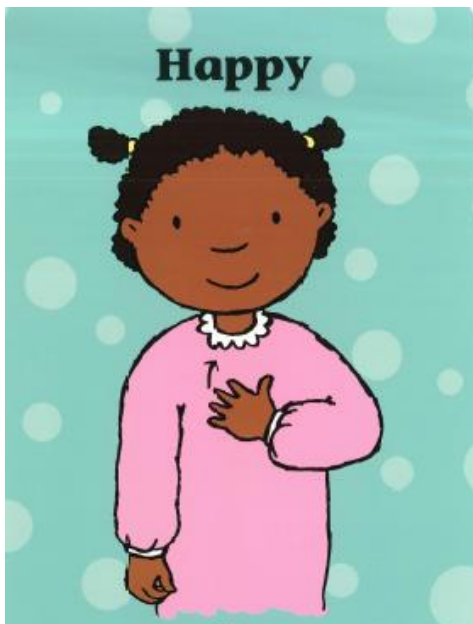


ASL: American Sign Language

Unit 4 Curriculum Support for Infants & 1YOs (January 18 – March 11)

Infants commonly get frustrated because they are unable to communicate their wants and needs with their care giver. When infants learn sign language before they are able to talk, they are able to communicate in an appropriate way. Research also shows that children who learn sign language early also begin to speak earlier!

**** Please also review and continue to integrate the signs introduced in Units 1-3**



Click [HERE](#) for a video



Click [HERE](#) for a video example.

Sign: Happy (With flat hand, pat chest with an upward stroking movement.)

One of our PBS tier 1 preventative strategies for Positive Behavior Support is simply helping children understand their own emotions – and it's never too early to start!

Use this sign to attach meaning to moments when little ones are expressing happiness!

Sign: Sleep (Place face in front of face and close fingers while moving hand downwards.)

Give children an opportunity to communicate with you when they feel sleepy by incorporating this sign into your day whenever it applies.

For example, while playing, you could say: "Our friend Liam is sleeping. He'll feel so much better when he wakes up!"

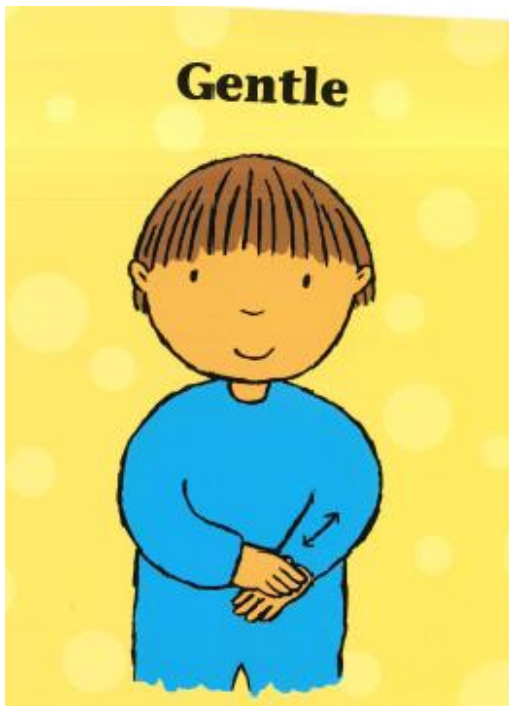


Click [HERE](#) for a video example.

Sign: Play (With thumb and little finger up, twist hand.)

Use this sign as an invitation to play!

When opening or refreshing a sensory bin, placing materials at a table, getting out a new bin of toys to explore, or even when placing a receiving blanket out to define the space – use this sign to signal that you’re excited to play with your little ones!



Click [HERE](#) for a video example.

Sign: Gentle (Stroke the back of the opposite hand.)

This sign is a great visual cue when redirecting little ones who may not know their own strength.

Infants and toddlers are naturally eager to see, touch, and be the first to get involved in something new – but it can be dangerous when smaller friends are in their way. Use the sign “gentle” to positively redirect their actions and actually show them what gentle feels like and looks like.



Click [HERE](#) for a video example.

Sign: Love (Cross fists over chest.)

What better way to complement the Valentine's Day Celebrations in our centers than to incorporate the sign for Love into your Doodle Days!

This is especially meaningful when combined with rocking a baby doll or talking about family photos posted on the playscape/bulletin board!



Click [HERE](#) for a video example.

Sign: Music/Song (Move hand back and forth rhythmically.)

Here is a great way to give children a sign for when they want to sing (or want you to sing), play instruments, etc.

For example, you can signal that you are going to sing by using the sign first, "Let's sing a song/Let's make music!" followed by the musical activity.